






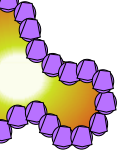
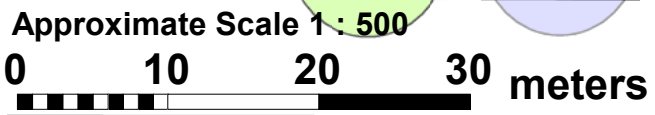


LEGEND

-  SNOW STORAGE AREA (DO NOT PLANT)
-  EXISTING TREE
-  EXISTING TREE (ASH)
-  PROPOSED TREE
-  AMEND SOIL & WOOD MULCH
-  STONEDUST PATH
-  GRANITE BOULDER
-  RAISED PLANTER WITH NATURAL STONE SEATING EDGE

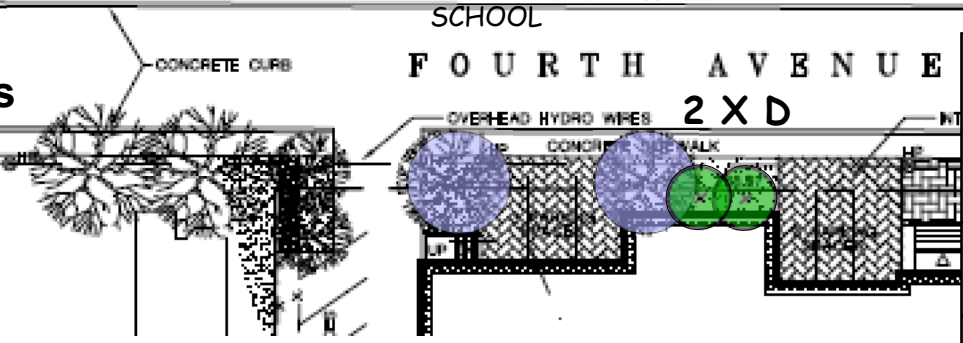
ISSUED FOR APPROVAL/ GRANT APP
TREES RELOCATED FEB. 2/10



SERVICEBERRY
NOTE: 2 ADDITIONAL SERVICEBERRY
TO BE INSTALLED IN PLANTERS
ON SE CORNER OF YARD

PLANT LIST

KEY	BOTANICAL NAME	COMMON NAME	SIZE	QTY
A	<i>Gleditsia tri. enermis</i> 'Shademaster'	Shademaster Honeylocust	50mm cal	1
B	<i>Acer rubrum</i>	Red Maple	50mm cal	6
C	<i>Celtis occidentalis</i>	Hackberry	50mm cal	4
D	<i>Amelanchier canadensis</i>	Downy Serviceberry	45mm cal	4
F	<i>Acer 'freemanii'</i>	Freeman maple	50mm cal	3






OTTAWA-CARLETON DISTRICT SCHOOL BOARD

TOYOTA | EVERGREEN
LEARNING GROUNDS
Imagine your city with nature

school:
MUTCHMOR P.S.
185 FIFTH AVENUE
OTTAWA

drawing title:
PLANTING PLAN/ CONCEPT

project title:
SCHOOL GROUND GREENING

drawn by: J. KASTER	 NORTH	1 OF 1
date: DECEMBER, 2009		
scale: N.T.S		